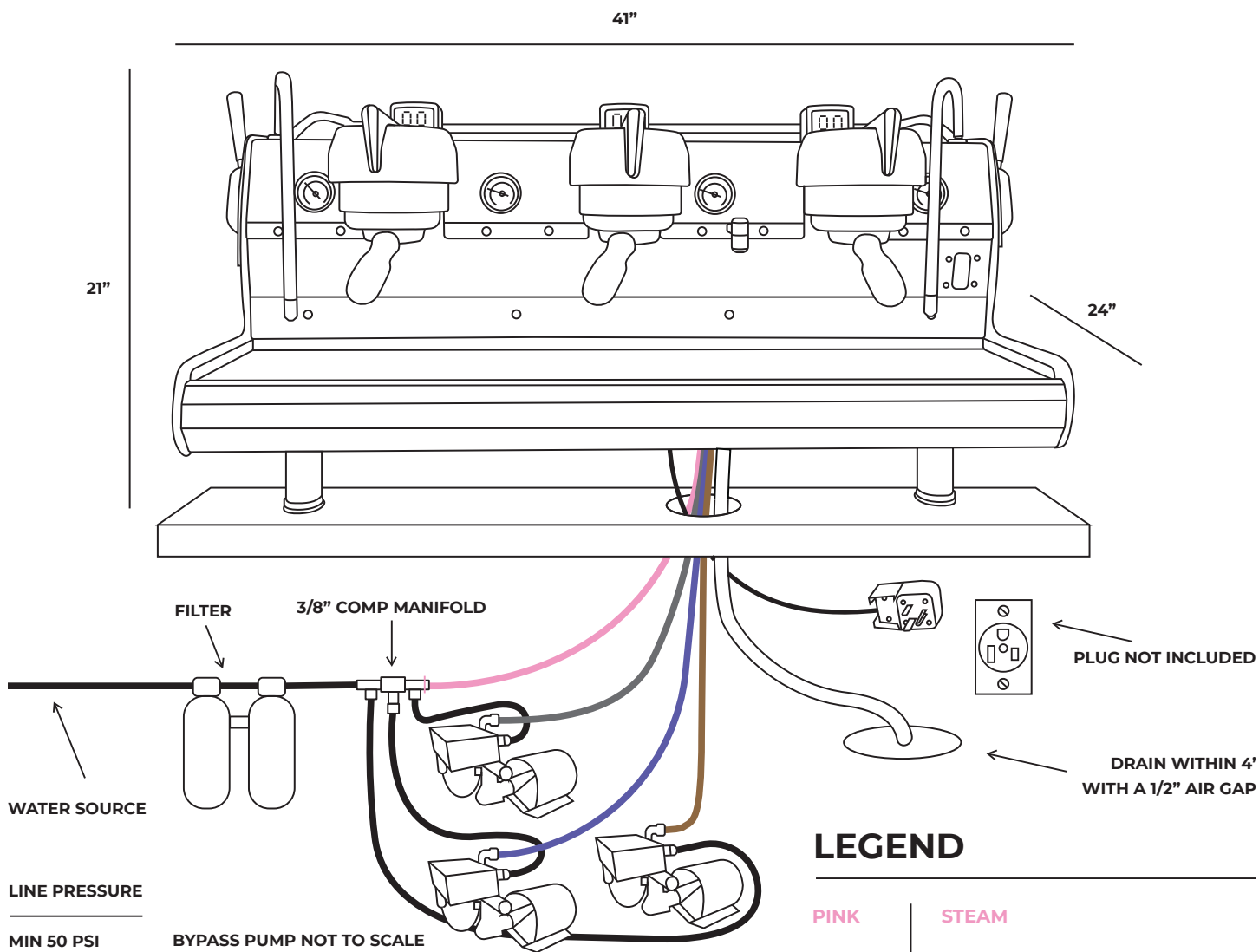
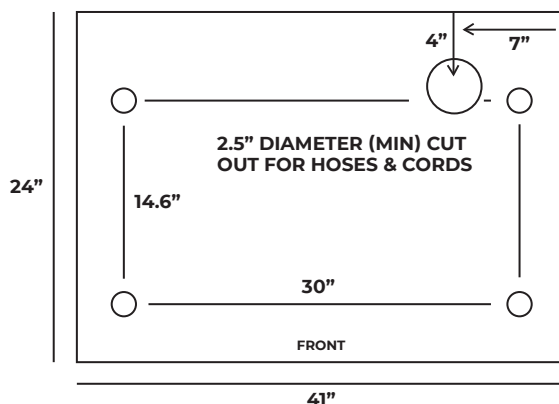


# MVP HYDRA 3 GROUP INSTALLATION GUIDE

synesso



## TOP VIEW



FOR COMPLETE INSTALL INSTRUCTIONS, PLEASE  
REFER TO TECHNICAL MANUAL PAGES 8-15

## SPECIFICATIONS

**DIMENSIONS :** 21"(H) 41"(W) 24"(D)

**WEIGHT :** 218 LBS (FULL)

**ELECTRICAL :** VOLTS: 220 / AMPS: 36

**PLUMBING :** LINE PRESSURE OF 50PSI (MINIMUM)

**FITTING :** 3/8" MPT W/SHUT-OFF

**DRAINAGE :** WITHIN 4 FEET OF MACHINE